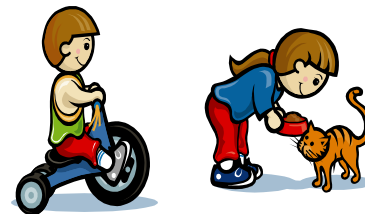
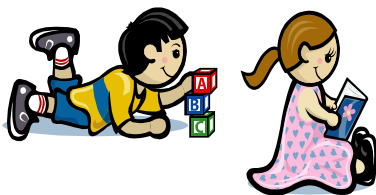


St. Paul UMC Preschool / Continuous Care/ Afterschool Attendance Options



June 2019-May 2020

*Please circle the attendance option/s of your choice
If you want Early Drop Off, add that price to your choice*

Early Drop off (7:30 - 8:50)	
3 Days/Week - \$45 monthly 5 Days/Week - \$55 monthly	
Preschool Only (8:50-12:00)	
Infant/Infant II/Toddler Classes 3 Days (M/W/F ONLY) - \$278 monthly 5 Days (M - F) - \$300 monthly	Two/Three/Four Year Old Classes *3 Days (M/W/F ONLY) - \$268 monthly 5 Days (M - F) - \$290 monthly *3 days (MWF) ONLY available for Two Year Old Classes
Preschool and Continuous Care (8:50 - 5:45)	
3 Days (M/W/F ONLY) - \$555 monthly 5 Days (M - F) - \$607 monthly	*3 Days (M/W/F ONLY) - \$530 monthly 5 Days (M - F) - \$580 monthly *3 days (MWF) ONLY available for Two Year Old Classes

Second Child Discount for Continuous Care or After-School Students - \$20

Afterschool (Jesse Boyd & Pine Street Students Only)
5 Days/Week - \$305 monthly - Includes Activity and Refreshment Fee 4 Days/Week - \$268 monthly - Includes Activity and Refreshment Fee 3 Days/Week - \$236 monthly - Includes Activity and Refreshment Fee
In-service days
In-service days (August and December) - \$30 per day fee
REGISTRATION - Infant to 4 year olds 12 month students - \$200.00/year (August - July) 9 month students - \$150.00/year (August - May)
REGISTRATION - School Age 12 month students is \$150.00/year (August - July) 9 month students is \$100.00/year (August - May)
FAMILY CAP for Registration is \$300.00 (includes all ages)

Child's Name: _____

Parent Signature: _____

Date: _____